



SDT Tool Management Release notes

Current version: 1.0.2070

Main features:

- Calibrate SDT devices
- Functionally test SDT devices
- Update SDT devices

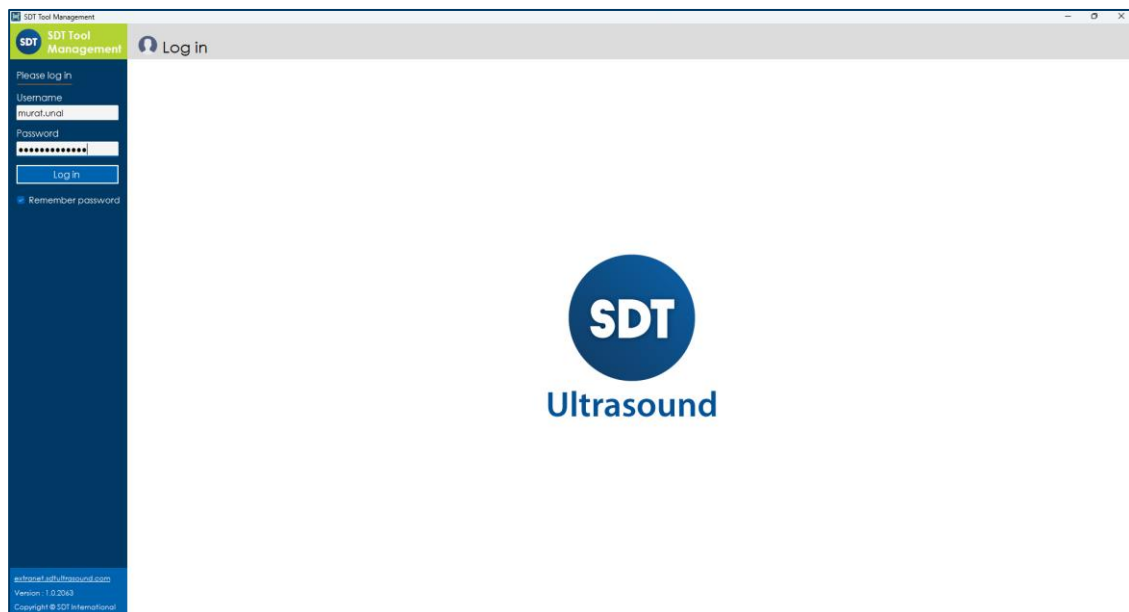
Supported operating systems:

- Windows 10
- Windows 11

Supported architectures:

- 32 bit
- 64 bit

This software is intended for use by SDT International approved service centers.



Modification history

Version 1.0.2070 [released on 11th March 2026]

- Minor improvements.
- Updated to the new brand guidelines (icon, logo, color).
- Updated report template
- Updated the SDT COMMONSense range check value.

Version 1.0.2063 [released on 11th July 2025]

- Minor improvements.
- Updated to the new brand guidelines (icon, logo, color).
- T-Sonic9 calibration improvements.

Version 1.0.2045 [released on 18th December 2024]

- Minor improvements.

Version 1.0.2042 [released on 6th December 2024]

- Removed the requirement to have admin rights to run SDT Tool Management.
- Update templates, calibration process name was not good (reverse IT to TI).
- Do not allow COMMONSense extend range to be saved in Extranet for those with an old version (< v574).

Version 1.0.2017 [released on 2nd January 2024]

- Removed deprecated Microsoft.Bcl.Async packages.

Version 1.0.2016 [released on 22th December 2023]

- Updated background noise and signal values for the COMMONSense RSC102 and RSC103 (Verification step).

Version 1.0.2012 [released on 30th November 2023]

- Management of IEPE COMMONSense.

Version 1.0.2011 [released on 25th October 2023]

- Integration of CRY SOUND Management in SDT Tool Management.
- Rewrite of dynamic mode for COMMONSense extended range during the detection.

Version 1.0.2003 [released on 16th May 2023]

- Activation of the detection of new sensors (RS2A and ExtUsAmp) for the SDT Ultrachecker.
- Management of RS2A and ExtUsAmp in SimSensor (SDT International).

Version 1.0.2002 [released on 18th April 2023]

- Fixed a bug that did not allow displaying the calibration values in the report for SDT Checkers.

Version 1.0.2001 [released on 29th March 2023]

- Updated templates with the new ISO 9001:2015 certificate number.

Version 1.0.2000 [released on 9th March 2023]

- Fixed an issue related to the reading of the firmware version of the Sinutest.

Version 1.0.1992 [released on 26th January 2023]

- Minor improvements.

Version 1.0.1990 [released on 9th January 2023]

- Add DAQ measurement devices to COMMONSense Tool.
- Change the minimum measurement value from 550 to 700 and the maximum measurement value from 1100 to 1400 for COMMONSenseRSC101.

Version 1.0.1989 [released on 14th December 2022]

- Fixed an issue where the application could freeze when printing the calibration report.
- Added the connection, registration and verification of the new COMMONSense (RSC101, RSC102, RSC103).

Version 1.0.1977 [released on 24th October 2022]

- SDT NA are now able to define a 340 device as a TankTest.
- Fixed an issue where messages boxes could be displayed behind the form and freeze the UI.
- Fixed a problem in the SDT270Calibration that changed the default printer of the computer.
- Added modification of the default compensation value of the RAPsodyBox in the SDTRAPsodyBoxCalibration.

Version 1.0.1972 [released on 28th September 2022]

- Fixed the bug concerning the mode for SDT340 which was not sent to Extranet.

Version 1.0.1971 [released on 15th September 2022]

Update dedicated to SDT International:

- Get multimeters and measuring devices (microphone) from Extranet to populate the COMMONSense GUI.
- The verifications values of the COMMONSense are sent to Extranet.
- Improvement of the template alignment for the COMMONSense report.

Version 1.0.1967 [released on 25th August 2022]

- Fixed a problem where the SDT Checker with an old firmware (before 3.1.403) could not update and the data was read incorrectly.
- Fixed an issue where an incorrect purchase order number was sent to the Extranet after calibration of an SDT270.
- Fixed an issue where the application would crash if the piezo 9 check failed when calibrating T-Sonic9.
- Fixed an issue during SonaVu and Vigilant registration. The device type on the Extranet was incorrect.

Version 1.0.1922 [released on 17th May 2022]

- Fixed a bug related to SDT340 detection

Version 1.0.1917 [released on 16th May 2022]

- Fixed graphical issue where update message was displayed twice.

Version 1.0.1909 [released on 16th March 2022]

- Fixed a bug in "SDT270Calibration" following a Microsoft Office (Word) update. The document no longer displayed the SDT logo in the header of the printed document is fixed in this version.

Version 1.0.1906 [released on 2nd March 2022]

- Fix bug during the SDTChecker detection if no device detected via Serial Port COM.

Version 1.0.1905 [released on 25th February 2022]

- Mouse wheel disabled in "ComboBox component" to avoid change the value during scroll.
- Update RAPsodyBox firmware via SDT Tool Management.
- Fix bug when calibrating SDT340.
- Fix bug in T-Sonic1 & T-Sonic 9 report.

Version 1.0.1899 [released on 9th February 2022]

- Handle the new json file format (VGL) for Vigilant.
- Possibility to connect to a second IP address for Vigilant.

Version 1.0.1892 [released on 24th January 2022]

- Fixed an issue where the software did not write equipment number in the Checker.

Version 1.0.1890 [released on 18th January 2022]

- General improvements

Version 1.0.1888 [released on 14th January 2022]

- New graphical interface for SDT270.
- Included Vigilant and SonaVu management.
- Added a calibration table for the Checker.
- Added security to avoid registering a device with wrong prefixes.
- Improved disconnection speed of Checkers when unplugged.
- When logged, possibility to collapse the left side menu with a button on top of it.
- Saving the user preference regarding the status of the side menu. This will allow to load the previous preference of side menu when opening the software.

- Fixed some minor graphical interface.
- Fixed an issue where we cannot connect another QC device than a SDT270 in T-Sonic1 and T-Sonic9 calibration software.
- Display of the connection information of the devices when they are detected.

Version 1.0.1850 [released on 12th October 2021]

- Fixed a bug that prevented SDT270 and SDT340 devices from updating during the calibration process.
- Added loading icon during device detection.
- Saving the user preference regarding the position of the log panel. This will allow to load the previous preference of panel when opening the software.
- General software improvement.

Version 1.0.1847 [released on 22nd September 2021]

- Fix bug regarding the registration of T-Sonic1.
- New graphical interface for T-Sonic9 Calibration and SDT 340 Calibration to have a software more intuitive and less "freezed".
- Improvement of USB detection in SDT340 Calibration and T-Sonic9 calibration.
- More messages are displayed when connecting and updating devices so that the user is aware of what the program is doing.

Version 1.0.1818 [released on 7th May 2021]

- Fix bug related to the blocking of the graphical interface during the calibration of Checker.
- Added audio values in SDT340 calibration report.
- Improvement calibration process for the SDT340.
- New graphical interface in the TSonic1Calibration.
- Improvement of device detection/communication in TSonic1Calibration.

Version 1.0.1815 [released on 29th April 2021]

- Added the choice of printer in the connection tab in SDTCheckerCalibration and SDTRAPsodyBoxCalibration.
- Improvement in SDTCheckerCalibration.

Version 1.0.1814 [released on 22th April 2021]

- Fix bug which blocks access to calibration for the LEAKChecker.

Version 1.0.1813 [released on 20th April 2021]

- Fix eq no in SDTCheckerCalibration

Version 1.0.1812 [released on 20th April 2021]

- Improved user interface.

Version 1.0.1807 [released on 16th April 2021]

- New graphical interface for the RAPsodyBoxCalibration and CheckerCalibration.
- Improved device detection for Checker, COMMONSense and RAPSodyBox.
- Improved user experience and ergonomics.

Version 1.0.1791 [released on 18th February 2021]

- Handle ParaDish2 for ULTRAChecker.

Version 1.0.1789 [released on 16th February 2021]

- Improved communication of SDTChecker with the software.
- Added progress bar during SDTChecker firmware update.

Version 1.0.1782 [released on 11th January 2021]

- Update SDT340 calibration report

Version 1.0.1781 [released on 5th January 2021]

- Update report template
- Several improvements

Version 1.0.1776 [released on 11th December 2020]

- Several improvements
- Handle COMMONSense.
- Handle new Checker

Version 1.0.1771 [released on 1st September 2020]

- Improvement communication/detection between sinutest and checker.
- Handle LEAKChecker and T-Sonic1 for ASML.
- Adding new Checker firmware in resource file.
- Updating Checker connections pictures (remove USB isolator).

Version 1.0.1769 [released on 13th May 2020]

- Improvement calibration process in SDTCheckerCalibration.

Version 1.0.1768 [released on 27th March 2020]

- Fix bug in SDTRhapsodyBoxCalibration regarding the registration of device in Extranet.

Version 1.0.1767 [released on 23rd March 2020]

- Improvement in SDTCheckerCalibration regarding the firmware update

Version 1.0.1760 [released on 28th February 2020]

- Fix in SDTCheckerCalibration firmware update issue.

Version 1.0.1758 [released on 26th February 2020]

- Handle SDTRhapsodyBoxCalibration.

Version 1.0.1727 [released on 13th December 2019]

- VGND test range value update.

Version 1.0.1714 [released on 4th October 2019]

- Fix bugs regarding “403 error” and improvements in SDT270Calibration.

Version 1.0.1710 [released on 4th October 2019]

- Improvements SDT270Calibration at the startup

Version 1.0.1701 [released on 18th September 2019]

- SDTChecker improvements

Version 1.0.1697 [released on 13th September 2019]

- Adding update management for Bluetooth module of T-Sonic9.
- Adding Checkers update from Extranet.
- Several improvements.

Version 1.0.1694 [released on 3rd of September 2019]

- First version released of software.