



SDT COMMONSense Tool Release notes

Current version: **1.0.2030**

Main features:

- Set parameters of COMMONSense
- Set COMMONSense mode (Static – Dynamic) on RSV
- Set COMMONSense gain on RSV, RSIE, RSC00x
- Upgrade the firmware of the RSC10x sensors to the latest version
- Functional test mode : displays RMS data collected in the last minute (1 sample per second), usable on RSC/RSV sensors

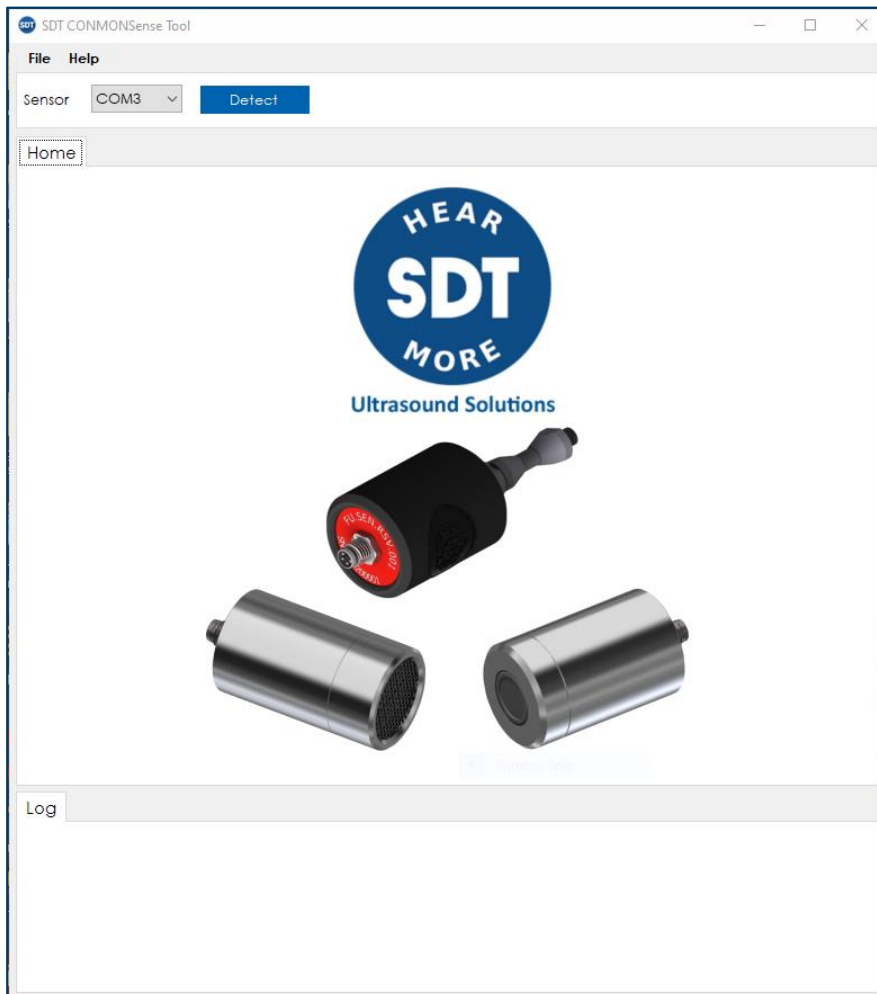
Supported operating systems:

- Windows 10
- Windows 11

Supported architectures:

- 32 bit
- 64 bit

This software is intended for use by customers with a COMMONSense sensor.



SDT COMMONSense Tool

File Help

Sensor: COM20 [Detect] [Disconnect]

Parameters

COMMONSense

PCB Serial ID: [REDACTED]

PCB n°: [REDACTED] Firmware version: 527

Equip. n°: [REDACTED] Sensor comp.: 0

Sensor type: COMMONSenseRSC001 Mode: Static

Mixer: 38500 Gain: 36

[Read parameters] [Write parameters]

Sensitivity table

Static mode | Static mode (loop powered)

Gain (db)	Linear Gain	Sensitivity (V/mA)	Offset (mA)	Optimal range (dBµV rms)
0	1	10	2	[86 - 105]
12	4	2,5	2	[74 - 93]
24	16	0,625	2	[62 - 81]
36	63	0,159	2	[50 - 69]
48	251	0,04	2	[38 - 57]
60	1000	0,001	2	[26 - 45]

Log

2022-02-09 14:30:02 - COMMONSense connected on port COM20
 2022-02-09 14:30:02 - Reading data from the COMMONSense
 2022-02-09 14:30:28 - COMMONSense disconnected
 2022-02-09 14:30:32 - Trying to open COM20
 2022-02-09 14:30:32 - Port COM20 opened
 2022-02-09 14:30:32 - COMMONSense connected on port COM20
 2022-02-09 14:30:32 - Reading data from the COMMONSense

SDT COMMONSense Tool

File Help

Sensor: COM7 [Detect] [Disconnect]

Parameters | Firmware Update | Functional Test

Do you want to replace test version with version 574 ?

Patch notes:

This version fixes a bug with Extended Range (ER) sensors where sensor randomly get caught in an endless loop.

- The software watchdog is now active when the sensor is in sleep mode.
- CLRWD (manual reload of the software watchdog) was removed from some functions because their processing time is short enough:
 - during serial port reading
 - during serial port setting
 - during analog digital conversion (temperature reading)
 Note : it was kept for the bootloader, since this section does not cause any issue.
- When TIMER_0 elapses, the serial communication status is reset. Which means, the serial communication status is now reset after a message is sent OR at the beginning of a cycle. Note : TIMER_0 is used by both serial communication and the auto output which can cause serial glitches.
- IO LINK test capability was temporarily removed because entering IO LINK mode could cause glitches (ER loop and serial

[Install the version 574]

Log

2024-05-03 14:16:04 - A COMMONSense was found on port COM7
 2024-05-03 14:16:04 - Reading data from the COMMONSense

SDT COMMONSense Tool

File Help

Sensor: COM7 [Detect] [Disconnect]

Parameters | Firmware Update | Functional Test

Log

2024-05-03 14:16:04 - A COMMONSense was found on port COM7
 2024-05-03 14:16:04 - Reading data from the COMMONSense

Modification history

Version 1.0.2030 [released on 23th of May 2024]

- Added the possibility to upgrade the firmware of the RSC10x sensors to the latest version.
- Added functional test mode : displays RMS data collected in the last minute (1 sample per second), usable on RSC/RSV sensors.

Version 1.0.2012 [released on 27th of October 2023]

- Added support for CONMENSENSE IEPE and associated parameters.

Version 1.0.1942 [released on 22th of June 2022]

- Added the possibility to download and install the driver if the installation via the software failed.

Version 1.0.1900 [released on 9th of February 2022]

- Changed the image of the home tab.
- Correction of typing error in sensitivity table.

Version 1.0.1898 [released on 4th of February 2022]

- First version released of software.