



SDT270 Sherlog Reporter Release notes

Current version: 1.2.1849

Main features:

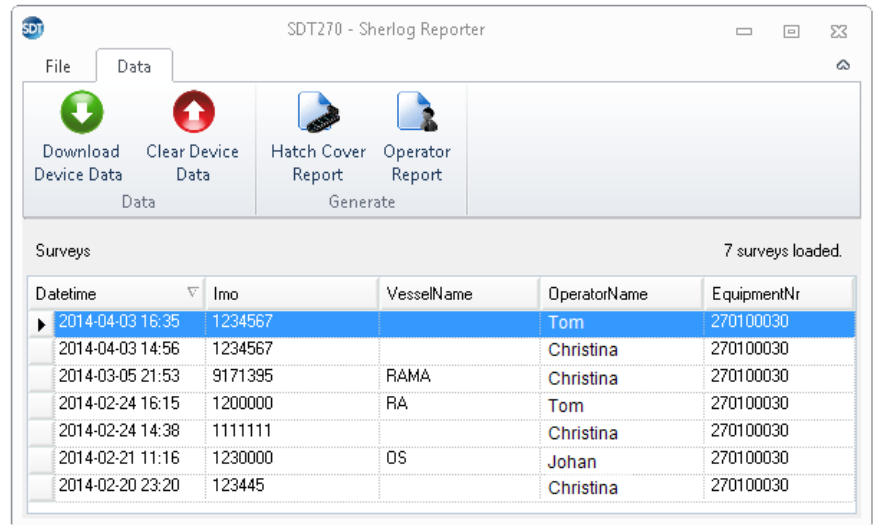
- Download SDT270 Sherlog data
- Generate Hatch Cover reports (editable docx files)
- Generate Operator log (editable docx files)

Supported operating systems:

- Windows 7
- Windows 8
- Windows 10

Supported architectures:

- 32 bit
- 64 bit



Modification history

Version 1.2.1849 [released on 30th of September 2021]

- Fix issue related to the sketch image that was not displayed
- Updating reports

Version 1.2.1412 [released on 14th of June 2017]

- Adding new logo
- Adding new splashscreen
- Upgrade infragistics
- Setup, application.exe and dll are digitally signed.
- Updating setup banner pictures.
- Updating reports

Version 1.2.1356 [released on 14th of November 2016]

- Remove obsolete dlls
- Upgrade controls to infragistics v16.1

Version 1.2.1229 [released on 20th of March 2015]

- Fix for occasional file transfer problem on Windows 8.

Version 1.1.1221 [released on 24th of February 2015]

- Technical upgrade (.NET Framework 4.0)
- Compatibility fixes for SDT2xx MK2 device

Version 1.1.1172 [released on 27th of October 2014]

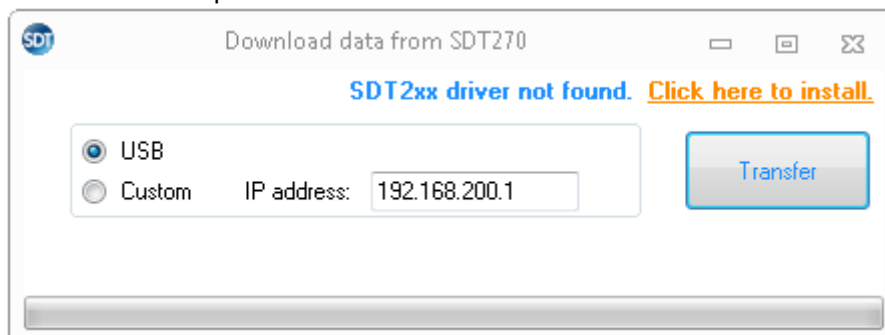
- Improved Clear Device Data process:
 - More feedback & user interaction
 - More error prone
 - Can fix corrupted databases
- Updated splash screen

Version 1.1.1121 [released on 23th of June 2014]

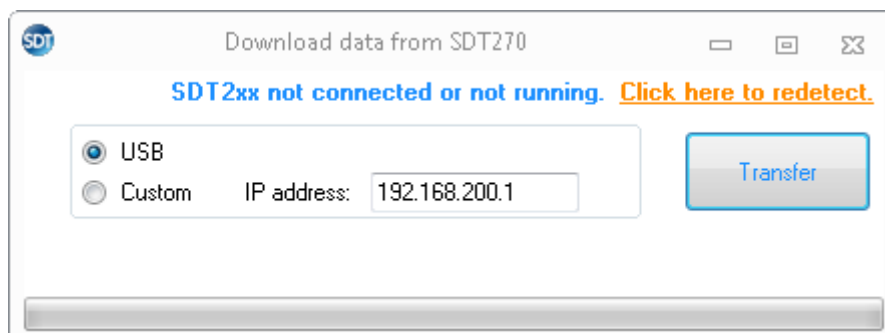
- Minor layout changes
- Refactored SDT2xxDriverInstaller logic

Version 1.1.1085 [released on 5th of May 2014]

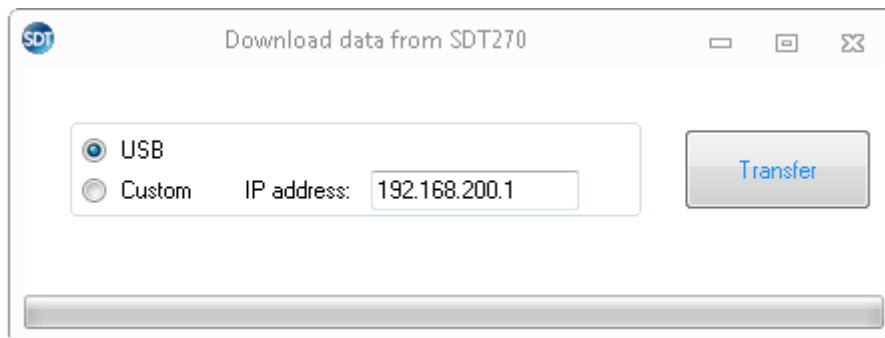
- Included **SDT2xxDriverInstaller**
 - Sherlog Reporter now checks if the computer has the new SDT2xx driver installed. If not, the user gets alerted.
 - This check occurs after the installation of the Sherlog Reporter and every time when the user is about to connect to the device:
 - Download data from SDT270
 - Clear device data
- The user is not forced to install the driver, he can ignore the warning. If he wants to install the driver, he just has to click the link (note: the installer is included in the software; it is not downloaded).
- As an extra feature, in a similar way, these forms also alert the user if he did not yet connect his SDT270 to the computer.



Screenshot: SDT2xx driver not installed



Screenshot: SDT2xx driver installed but device not connected



Screenshot: SDT2xx driver installed and device connected



Screenshot: SDT2xx Driver Installer

Version 1.1.979 [released on 11th of February 2014]

- Fix: if expireDate of operator in imported sherlog.db is empty, the clear data failed (when copying the operators to the empty database). Fixed now (will use minimum date).
- Fix: toolbar displayed &File and &Data. Removed the & character.