

Activation and registration of DataDump application

Content:

[Serial number](#)

[Hardware code](#)

[Registration](#)

[Activation](#)

Serial number

You previously received your serial number by e-mail:

Dear.

A serial number has been generated:

Company: My Company

Customer: John Mouser

Serial number: 123456789

License Type: Update

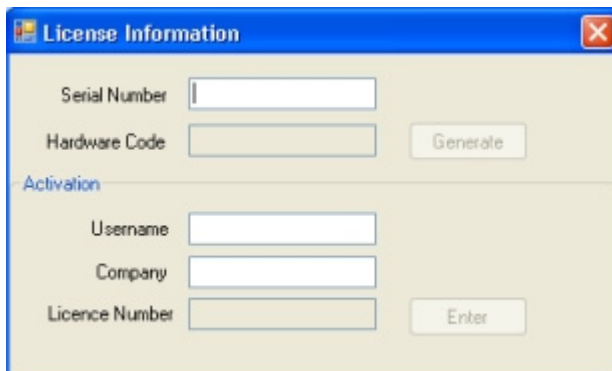
Support: 6 months setup support (free)

Due date: January 13, 2011

Goto www.sdt.be/license/OpenOffice/Activation.php to apply for your license number.

Standard e-mail of serial number attribution

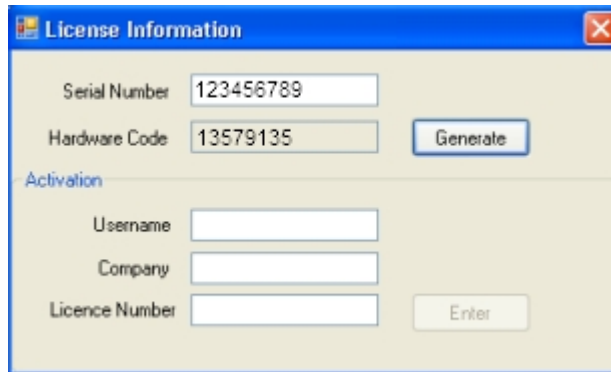
During the first launching of the DataDump application, the following license window opens automatically:



Encode your serial number in the corresponding field.

Hardware code

Generate your hardware code by clicking on the button "**Generate**":

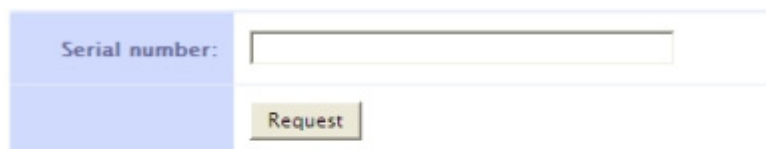


The hardware code has been generated

Registration of DataDump

Visit our server at the address www.sdt.be/license/OpenOffice/Activation.php.

Encode your serial number in the corresponding field and then click "**Request**":



[Retry](#)

Type your serial number

The server asks you to confirm your coordinates:



[Retry](#)

If information is correct, tick the box "**I have validated my information:**", type your hardware code in the corresponding field and click "**Validate**". The system send you by e-mail your license number.

If information is incorrect, please contact your local dealer or SDT International.

Dear .

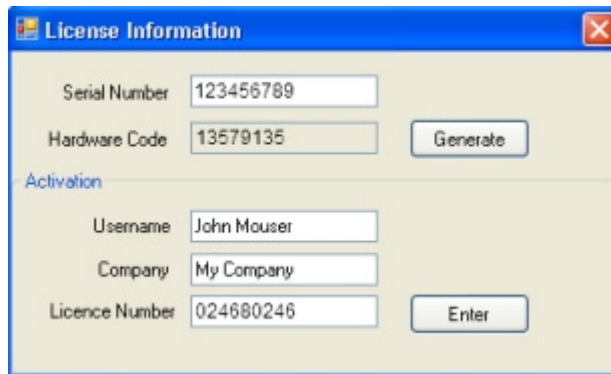
Company: My Company
Customer: John Mouser

Serial number: 123456789
Update license: 024680246

Standard e-mail of license number attribution

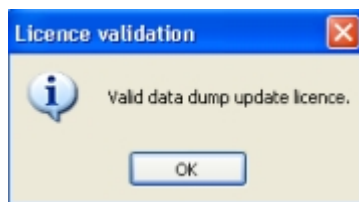
Activation of DataDump

Come back to the license window of DataDump, type your license number in the regarding field and click "**Enter**". You can also add your user and company names:



Type the license number, your user and company names

The application confirms your activation is successfully completed:



You can now update or upgrade your SDT270 device using DataDump.