

# Be a **LUB**Expert<sup>®</sup>

## Grease Bearings Right



**SDT LUBExpert**  
ADD 6 SHOTS (6g)  
AND PRESS ENTER  
NO CHANCE-SAFETY ON

10g	⚠
(40g)	

HEAR  
**SDT**  
MORE

Available  
with  
**Dynamic  
Analysis**

# LUBExpert®

A complete ultrasound solution to manage your acoustic lubrication and condition monitoring program.

## LUBExpert tells us when to grease... and when to stop.








Grease reduces friction in bearings. Less friction means longer life. LUBExpert alerts you when friction levels increase, guides you during re-lubrication, and prevents over and under lubrication.

## LUBExpert Dynamic connects the Lube Team with the ConMon Team.

LUBExpert Dynamic delivers advanced analysis of bearing condition. During grease replenishment, dynamic data is captured in the background. These outcomes are fed to the condition monitoring team to help assess real-time bearing condition.



## LUBExpert Features

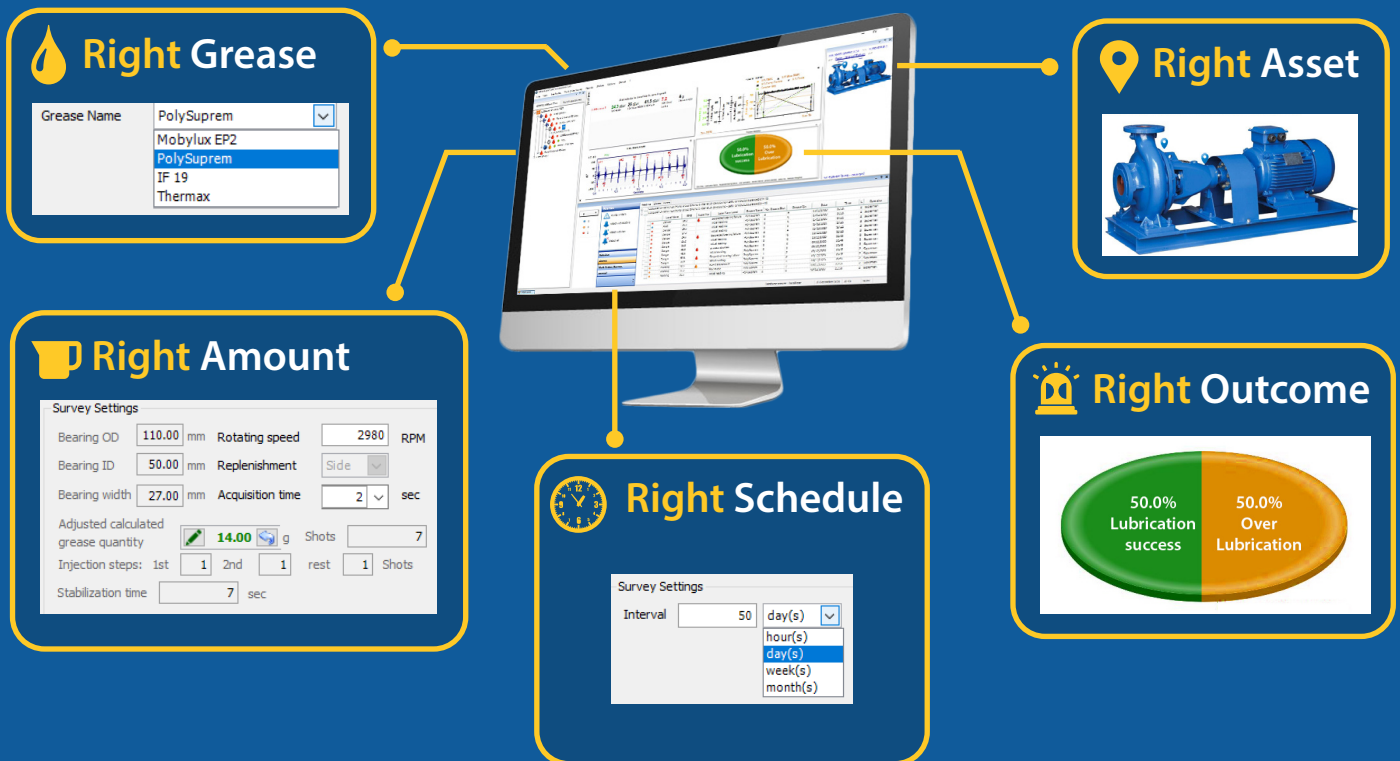
-  **Bearing Database**  
LUBExpert maintains a database of all your assets including bearing type and dimensions.
-  **Guided & Free Modes**  
Lube techs can choose between "FREE" and "GUIDED" modes to grease bearings right.
-  **Shopping List**  
LUBExpert reminds you to bring the right grease type, gun, and quantity for the day's lube tasks.
-  **Automation**  
LUBExpert removes the guesswork by automatically calculating the stabilization time between grease pumps.
-  **Work Orders**  
The workflow inherent in LUBExpert restores order and discipline to your lubrication program.
-  **System Messaging**  
LUBExpert uses messaging to document each decision made by the lube-tech. I.E. "safety risk", "asset not in operation".
-  **LUBExpert Dynamic**  
With the **Dynamic Option**, you'll reduce data collection time while increasing the efficiency and communication between the lube and condition monitoring teams.

# Ultranalysis<sup>®</sup> Suite 3

Manage, trend, and analyze your ultrasound data.

- Create hundreds of databases and surveys
- Track grease types and grease consumption
- Precise diagnosis with SDT's 4 Condition Indicators
- Sort assets by status: lubrication success/failure, over greased, shorten interval, suspected bearing failure, ...

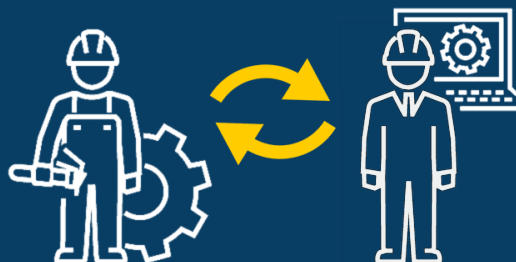
During any lube task, the **Dynamic Option** collects analytics in the background, thereby providing asset condition data to both the lube and condition monitoring teams. This is a win for communications, efficiency and overall reliability.



## Break Down the Silos

Dynamic data collected by LUBExpert is displayed in UAS3 in the Time and Frequency domain.

This dual reliability benefit saves time while removing information silos.



The lubrication team can now collect dynamic data for the condition monitoring team.

Asset condition information is now transparent across departments.

The **Dynamic Option** completely removes the information gap between lubrication and condition monitoring teams. By having the Lube Team collect and (if necessary) monitor Dynamic data, it becomes an integral member of the Condition Monitoring Team.

# LUBExpert Kit



- LUBExpert Standard Device
- Universal Battery Charger
- Ultranalysis Suite 3 (UAS3) Master
- Headphone, Neckband
- Shoulder Strap and Leather Belt Holder w/ Clip
- USB Cable
- SDT USB Memory Drive
- LUBExpert Custom Carrying Case
- LUBEsense1 Contact Sensor w/ Cable and Magnetic Bases
- LUBEAdaptor
- Grease Gun Mounting Cradle

## LUBExpert Specifications

General		Temperature Measurement	
External Sensor(s)	SDT LUBEsense1 only	Measuring Range	-70 to +380°C / -94 to +716°F
Internal Sensor(s)	Infrared Temperature	Accuracy (0 to 50°C / 32 to 122°F)	± 0.5 °C / ± 32.9 °F
Software Compatibility	Ultranalysis Suite 2 Ultranalysis Suite 3	Field of View (attenuation of 50%)	10°
System		Data Collector	
Operating System	Linux	Memory Capacity	More than 10,000 data distributed over more than 10,000 measurement locations
CPU	ARM9		
Data memory	256 Mb		
Signal Processing		Mechanical Characteristics	
Dynamic range	109 dB	Display	Graphic Backlit LCD (128 x 64)
Resolution	16 bits	Housing	Extruded Aluminum, Shockproof Rubber Protection
Sampling rate	256 kHz	Dimensions	226 x 90 x 40 mm / 8.90 x 3.54 x 1.57 in (L x W x H)
Response time	<10 ms	Weight	830 g / 29.3 oz
Ultrasound Measurement		Operating and Storage Temperature	-15 °C to +60 °C / 14 °F to 140 °F
Measuring Range	-15 to 120 dBµV	IP rating	IP 40
Resolution	0.1 dBµV	Power	
Signal to Noise Ratio	-6 dB	Battery	Rechargeable NiMH battery.
Bandwidth	36.1 to 40.4 kHz	Nominal Capacity	4.4 Ah
Condition Indicators	RMS, maxRMS, Peak, Crest Factor	Autonomy	+8 Hours
		Recharge Time	6 Hours
Heterodyne Sampling Rate	8000 Samples/s (dynamic version)	Battery Charger	110-230 VAC, 50/60 Hz
		Headphone	
		Noise Reduction Rating	25 dB

### SDT Mission

SDT provides ultrasound solutions that help our customers gain a better understanding about the health of their factory. We help them predict failures, control energy costs, and improve product quality while contributing to the overall reliability of their assets.

Your SDT Certified Partner



**SDT International s.a./n.v.**  
 Bd de l'Humanité,415  
 B-1190 Brussels - Belgium  
 Tél: +32(0)2-332 32 25  
 Email: info@sdtultrasound.com

**SDT North America**  
 7677 County Road 2, Cobourg,  
 ON K9A 0X4 Canada  
 Toll Free NA: 1-800-667-5325  
 Intl Phone: 1-905-377-1313  
 Email: hearmore@sdtultrasound.com

[www.sdtultrasound.com](http://www.sdtultrasound.com)